

# GI

YACHT CLUB  
EST 1934

# SAILING INSTRUCTIONS

**One Design Regatta**  
**SATURDAY, July 14, 2018**



## 1) MANAGEMENT AND RULES

- a) The races will be under the management of the Grosse Ile Yacht Club Race Committee, which will have full and final authority in establishing the racing articles and in interpreting the rules. The One Design Regatta will be governed by the 2017-2020 RACING RULES of SAILING, and the prescriptions of the UNITED STATES SAILING ASSOCIATION except as modified by these sailing instructions, which shall take precedence if conflicts occur. In addition, yachts shall abide by all rules as prescribed by their class and rating rule.

## 2) SCHEDULE

### Saturday, July 14th

08:00 am = Visitors arrive GIYC harbor or outer dock (or night of the 13<sup>th</sup>)

09:00 am = Skipper's Meeting – To be held on the upper deck at GIYC.

10:35am = First Class Start – Starting area is approximately one hour motoring from GIYC.

3:00 pm = No races start after this time

4:00 pm or after last race = Return to club and depart for Hartwell's house (28375 Elba Drive, Grosse Ile, MI). Parking spaces needed at club for wedding. Transportation for sailors without cars will be provided.

5:00 - 11:30 pm = Hartwell's house for "dish to pass" dinner and pool party (set-ups, snacks, liquor and beer provided)

7:00 pm = Awards Ceremonies

### Sunday, July 15<sup>th</sup>

08:00 am = Breakfast at Bohl's house (29725 Bayview, Grosse Ile, Mi)

## 3) COURSES

- a) Courses marks will consist of the WSSC buoys. See section #13 for details.
- b) There will be 3 types of courses for each mark on the perimeter of the circle.
  - Option #1 - C upwind to weather mark and downwind back to finish at C
  - Option #2 - C to weather mark, downwind to leeward mark and then upwind to finish at C
  - Option #3 - C to weather mark, downwind to leeward mark, upwind to weather mark again and then downwind to finish at C
- c) Course lengths will be approximately 2Nm, 4 Nm, or 6 Nm.
- d) The Committee Boat will announce the Course Option# and the Weather Mark, once on station.
- e) Gate will be closed. Do not cross through the start/finish line except when starting or finishing the race.

## 4) RADIO COMMUNICATION (CHANNEL 71)

- a) VHF Channel 71 will be used for communication, as well as for notification of a race being cancelled due to bad weather.
- b) Any yacht which retires from the race shall contact the committee boat on channel 71.

## 5) STARTS

- a) Races will be started using RRS rule 26.
- b) WSSC "C" Mark and the race committee flag on the committee boat will designate the ends of the starting line.
- c) The committee will attempt to acknowledge any boats on the course side of the starting line at her starting signal by one or more of the following: displaying code flag X (white with blue cross), sounding a horn for each premature starter, and hailing the sail number or boat name, either verbally or on VHF Ch 71. Failure of the committee boat to use these signals or failure of a competitor to observe these signals will not excuse a premature start. It is the responsibility of each yacht to make a proper start.
- d) The committee may utilize a protection buoy. This buoy will be approximately five yards from the committee boat. This buoy is considered an extension of the committee boat. No boat may properly start or finish between the protection buoy and the committee boat.
- e) The start sequence of the first race will be announced at the Skipper's meeting. Succeeding races will take place when the competitors of a class have finished. Stay in the area after you finish.

## 6) FINISH

- a) WSSC "C" Mark and the race committee flag on the committee boat will designate the ends of the finish line.

## 7) SCORING

- a) The Low Point Scoring System applies.
- b) RRS Rule A2, Series Scores, no score will be excluded (no throw outs).
- c) It is the intention of the RC to run three or more races but one completed race will constitute a series.

## 8) AWARDS

- a) Flags, trophies or suitable awards, if any, will be provided by each class organization

## 9) ALTERNATE PENALTIES

- a) RRS 44.1 is changed to only require a one-turn penalty.

## 10) SIGNALS

- a) Should the Race Committee need to postpone a race, they will hoist the Postponement signal, which is a red and white striped answering pennant. All classes that have not started will be postponed as follows: The Race Committee will sound two (2) horns drop all other flags and raise the answering pennant. When the race committee boat decides to resume the starting sequence they will lower the answering pennant, and will sound one horn blast. The normal warning or preparatory signal will be hoisted one (1) minute after the answering pennant is lowered and the starting sequence is resumed.

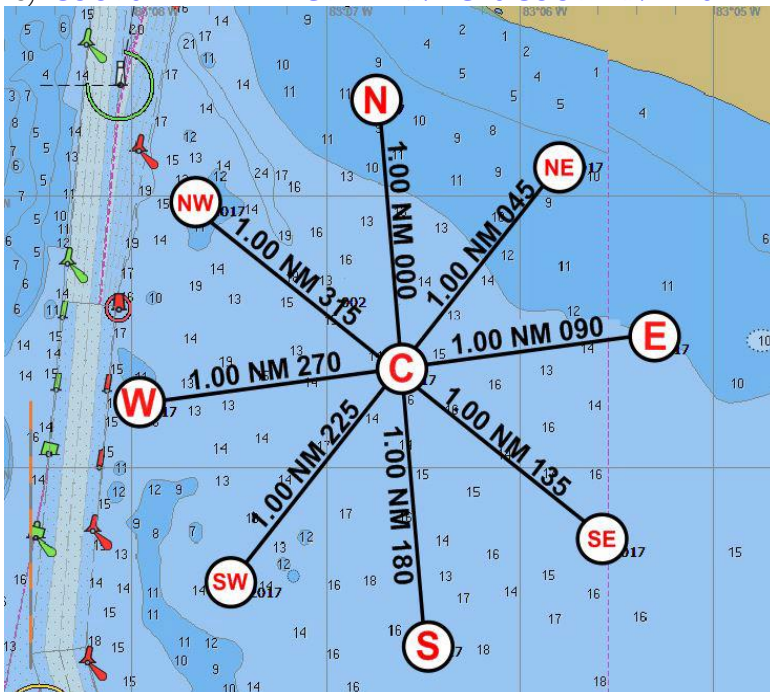
## 11) RATINGS

- a) Boats will race "boat for boat" under their class rules. If a class agrees as a group to equalize differences in boats by using their PHRF rating the race committee will take finish times of boats in that class.

## 12) ENTRIES

- a) Entry is open to all monohull sailing auxiliaries that meet the Federal Requirements for Safety and Lighting. The Skipper must ensure that the yacht is well found, thoroughly seaworthy, and that the hull, spars, rigging, sails, and all equipment is properly maintained and stowed and that the crew knows where it is kept and how it is used. Sail numbers must be carried on both sides of mainsail and overlapping headsails. Spinnakers must have sail numbers on at least one side, in compliance with RRS Appendix G. Finish times may not be taken if sails are not numbered as registered.
- b) The safety of a yacht and its crew is the sole and inescapable responsibility of the skipper. It shall be the complete and unlimited responsibility of each skipper to decide whether to start, continue, or finish a race. Skippers must be a member of a yacht or sail club, or other organization affiliated with a national sailing authority. All yachts shall be manned by a competent crew who are physically fit to face adverse conditions
- c) Personal flotation devices or harnesses are recommended to be used.
- d) All owners of participating yachts will be responsible for having in effect during the race, the proper liability protection necessary to insure against loss or damage of property and/or life for the safety of other competing yachts.
- e) Boats must register online at [www.noticeofrace.net](http://www.noticeofrace.net). This will allow race organizers to plan appropriately.
- f) ALL Boats must also complete and SIGN the Race Entry Form (located [www.giyc.com](http://www.giyc.com) and [www.noticeofrace.net](http://www.noticeofrace.net)) and deliver it, together with the required class fee, to the Race Committee at the skippers meeting.

## 13) COURSE MARK DIAGRAM AND GPS COORDINATES



<b>C</b>	<b>N42.01.3854 W083.06.6223</b>
<b>E</b>	<b>N42.01.4959 W083.05.3077</b>
<b>NE</b>	<b>N42.02.1653 W083.05.8038</b>
<b>N</b>	<b>N42.02.3802 W083.06.7850</b>
<b>NW</b>	<b>N42.02.0057 W083.07.6806</b>
<b>W</b>	<b>N42.01.2687 W083.07.9782</b>
<b>SW</b>	<b>N42.00.6022 W083.07.4780</b>
<b>S</b>	<b>N42.00.3872 W083.06.4776</b>
<b>SE</b>	<b>N42.00.7527 W083.05.5806</b>